



ALPHA'S α
アルファス株式会社

All Ways with You
どんな道でも
いつも一緒に

ATF/CVTF APPLICATION CHART

Updated 2020/04

Make	Type	OE Spec	ATF α	CVTF α	Make	Type	OE Spec	ATF α	CVTF α			
トヨタ TOYOTA	ATF	Auto Fluid Type T / T-III / T-IV	☆☆☆	NG	三菱 MITSUBISHI	ATF	ATF SP / SP-II M	☆☆☆	NG			
		Auto Fluid D-II / D-III	☆☆☆	NG			ATF SP-II	☆☆☆	NG			
		Auto Fluid WS	☆☆☆	NG			ATF SP-III (for AT)	☆☆☆	NG			
		Automatic Gearbox Oil ATF 3+	☆☆☆	NG			ATF II / SK / J-2	☆☆☆	NG			
		AMMIX Auto Fluid D-III	☆☆☆	NG			ATF AW	☆☆☆	NG			
	CVT Fluid TC	☆☆	☆☆☆	ATF J-3			☆☆☆	NG				
CVT Fluid FE	☆☆	☆☆☆	ATF PA	☆☆☆			NG					
日産 NISSAN	ATF	Matic Fluid J / S	☆☆☆	NG		ATF-MA1	☆☆☆	NG	CVTF	ATF SP-III (for CVT)	☆☆	☆☆☆
		Matic Fluid D (for AT)	☆☆☆	NG		CVT Fluid-J1	☆☆	☆☆☆				
		Matic Fluid G	NG	NG		CVT Fluid-J4	☆☆	☆☆☆				
		AT Oil Special (for PINO)	☆☆☆	NG		CVT Fluid-J4 +	☆☆	☆☆☆				
		N-CVT Fluid	☆☆	☆☆☆	other	SSTF-1	NG	NG				
	CVTF	Matic Fluid D (for CVT)	☆☆	☆☆☆	スバル SUBARU	ATF	SUBARU ATF / ATF 3A/T / ATF 5A/T	☆☆☆	NG			
		CVT Fluid NS-1 / NS-2	☆☆	☆☆☆			OPEL Genuine ATF	☆☆☆	NG			
		CVT Fluid NS-3	☆☆	☆☆☆		CVTF	SUBARU ECVT / i-CVT Fluid	☆☆	☆☆☆			
		CVT Fluid KTF-1 (Toroidal)	NG	NG			SUBARU i-CVT Fluid FG	☆☆	☆☆☆			
		other	Mission Oil R35 Special	NG			NG	SUBARU CVT Fluid (Lineartronic)	☆☆	☆☆☆		
Ultra ATF-II / ATF Z-1	☆☆☆	NG	SUBARU CVT Fluid (LineartronicI)	☆☆			☆☆☆					
ホンダ HONDA	ATF	Ultra ATF DW-1	☆☆☆	NG		SUBARU High Torque CVT Fluid (Lineartronic)	NG	NG				
		Ultra HMMF	☆☆	☆☆☆		スズキ SUZUKI	ATF	SUZUKI AT OIL	☆☆☆	NG		
	Ultra HCF-2	☆☆	☆☆☆	SUZUKI AT OIL Special				☆☆☆	NG			
CVTF	MAZDAATF D-II / M-III / M-V / F-1	☆☆☆	NG	SUZUKI ATF 5D06 / 2384K				☆☆☆	NG			
	MAZDAATF FZ	☆☆☆	NG	SUZUKI ATF 3314 / 3317	☆☆☆			NG				
マツダ MAZDA	ATF	JWS 3317	☆☆☆	NG	SUZUKI ATF AW-1			☆☆☆	NG			
		ATF 3324(Electric CVT)	☆☆☆	NG	CVTF		SUZUKI CVT OIL / SCVT	☆☆	☆☆☆			
	Mobil CVT 3320	☆☆	☆☆☆	SUZUKI CVT Fluid Green 1 (1V)			☆☆	☆☆☆				
	CVTF	AMMIXATF D-III Multi	☆☆☆	NG			SUZUKI CVT Fluid Green 2 (2V)	☆☆	☆☆☆			
AMMIXATF D-3 SP		☆☆☆	NG	CVT Fluid 3320			☆☆	☆☆☆				
ダイハツ DAIHATSU	ATF	AMMIXCVT Fluid DC	☆☆	☆☆☆			CVT Fluid 4401	☆☆	☆☆☆			
		AMMIXCVT Fluid DFE	☆☆	☆☆☆	Gear Oil	NG	NG					
	CVTF	Gear Oil	NG	NG	日野 HINO	ATF	BLUE RIBBON ATF	☆☆☆	NG			
いすゞ ISUZU	ATF	BESCO ATF-II / III	☆☆☆	NG								

DISCLAIMER : The above application chart is provided only for quick and easy reference. Please check the vehicles owner's manual prior to use for compatibility.

【備考・REMARKS】 ●交換後に異常を感じた場合は、直ちに整備を受けて下さい。 ●改良などの為、事前の告知なく変更する場合がございます。 ☆☆☆ ベストマッチ / Best
●In case of unexpected behavior after exchange, ask for service immediately. ●Subject to change w/o prior notice for improvement and others. ☆☆☆ 使用可能 / Good
☆☆☆ NG 使用不可 / NO Good



ATF/CVTFは定期交換(2年又は20,000km以内)をお勧めします。
ATF/CVTF is recommended to exchange every less than 2 years or 20,000 km.

- α フルード交換は、加速や燃費、乗り心地などをできるだけ新車の状態に近づけ、又、AT/CVT機構の寿命を延長させることが目的です。
- α The fluid-exchange is aimed to refresh the conditions such as acceleration, resource conserving and driving confort, and to extend the life period of AT/CVT system.
- α フルード交換によって、部品の摩耗・損傷を修復することはできません。
- α Fluid-exchange will not repair any abrasion/damage of any parts.



ALPHA'S CO., LTD.
744-2, Iwase, Wakayama-shi,
Wakayama 640-8301 JAPAN
Email info@alphas-jp.com
URL http://www.alphas-jp.com



AUTOMATIC TRANSMISSION FLUIDS

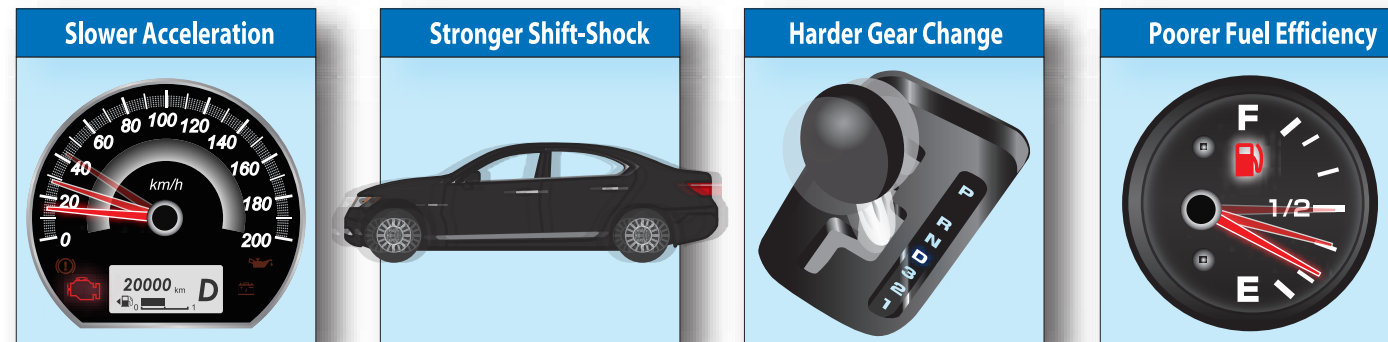


made in JAPAN

ALPHA'S CO., LTD.

WHY CHANGE ATF/CVTF?

■ If you do not change ATF/CVTF...



ANY FAILURES?

■ Most AT/CVT failures are due to deteriorated fluids



▲A burned clutch plate

▲An element clogged with wear particles.

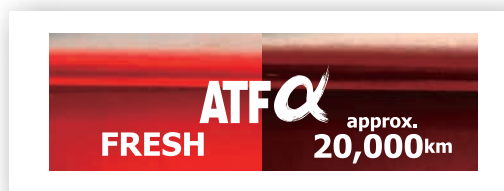
▲Bottom of the oil pan covered with sludge

ATF/CVTF will be deteriorated according to mileage and time, and such deteriorated fluids will cause failure of automatic transmission system. If you would not change fluids in proper timing, ATF/CVT unit would have serious damage to be stuck while driving.

WHEN TO CHANGE?

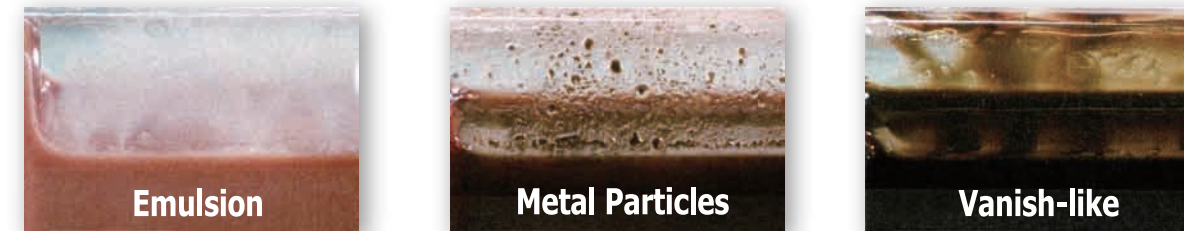
■ Every less than 2 years/20,000km

Also, color comparison can be one of rough indications when to change ATF/CVTF -- its color will get darker and darker according to mileage. Please note that color will vary upon conditions.



DO NOT CHANGE !!!

■ Overhaul and/or Repair Recommended



If you would find above kind of appearance of ATF/CVTF mechanical problems have occurred. Do NOT change fluids but check mechanical conditions in prior to change.

Also, in the following cases, please refrain from changing fluids. For the following cases, fresh fluid might cause troubles inside of AT/CVT system.

- No change for more than **5 years or 50,000 km**
- **10+ years old** vehicle
- Odometer indicates **100,000+ km**
- Any vehicles **not listed on ALPHA'S OIL DATA BOOK** (Latest : 2020 Edition)

AT/CVTフルード TRANSMISSION FLUID



	Product Code				Base Oil		Application		Color
	1Lx20	4Lx6	20L	200L	Full Synthe	Semi Synthe	AT	CVT	
ATF	792400	792401	792446	792449	---	✓	✓	✓	Red
CVTF	792541	792544	792546	792549	✓	---	---	✓	Yellow